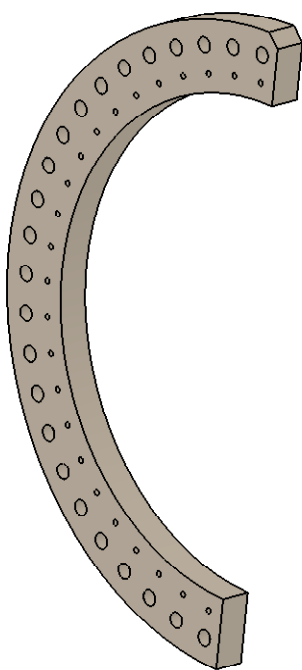
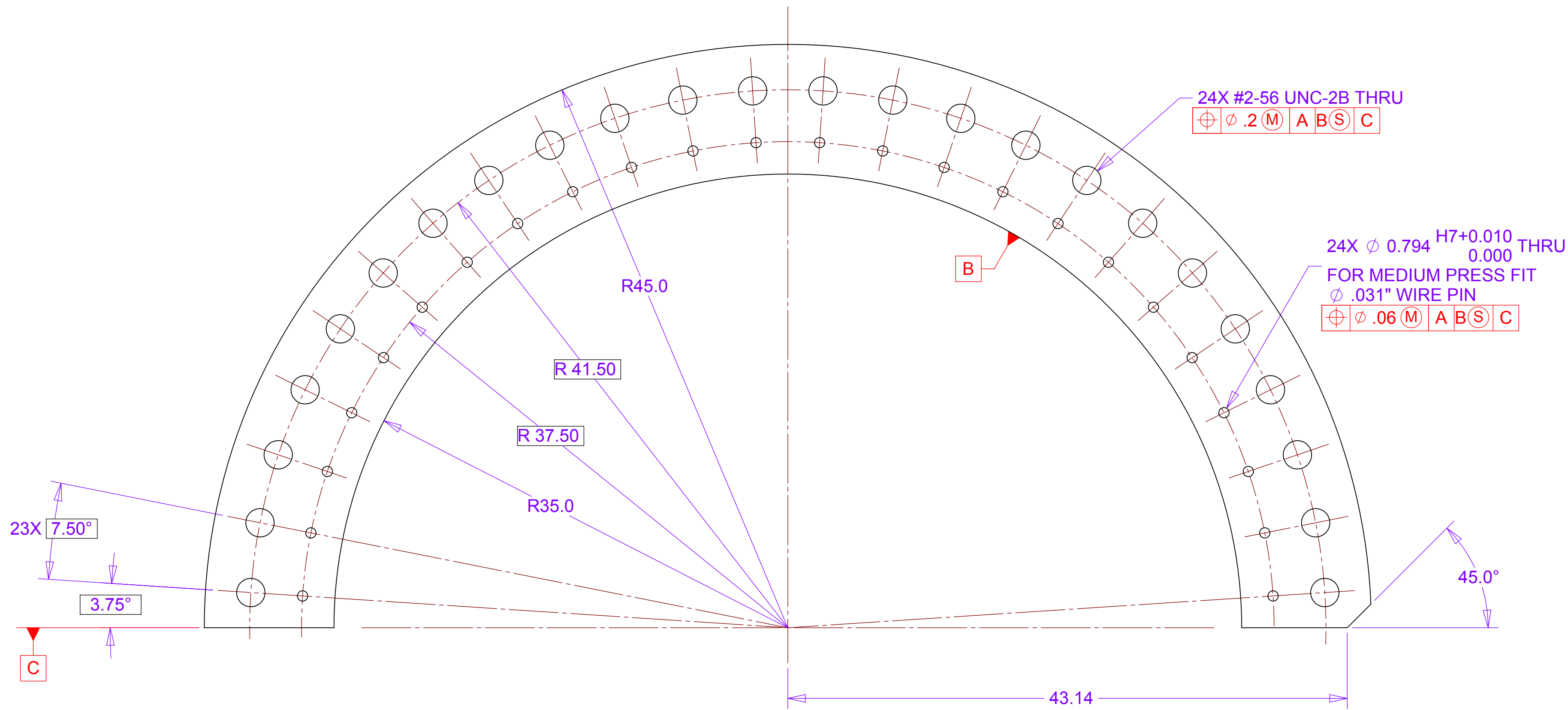


8 7 6 5 4 3 2 1

REV	REVISIONS	DATE	APPROVED
	DESCRIPTION		

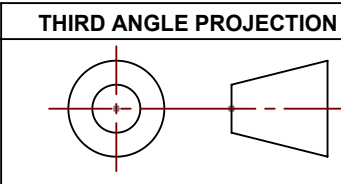


MATERIAL: CARBON LOADED PEEK

NOTES: UNLESS OTHER WISE SPECIFIED

1. ALL DIMENSIONS IN MILLIMETERS
2. DIMENSIONS AND TOLERANCING PER ASME Y14.5M-1994
3. SURFACE TEXTURE PER ANSI/ASME B 46.1-1985
4. REMOVE ALL BURRS AND BREAK SHARP EDGES TO A MAXIMUM OF .4
5. ALL INSIDE CORNERS TO BE .4 RADIUS MAX
6. COUNTERSINK 82 DEGREES ALL TAPPED HOLES TO MAJOR DIAMETER
7. COUNTERSINK 82 DEGREES APPROXIMATELY .08/1.5 DEEP ALL DRILLED HOLES
8. PARTS TO BE THOROUGHLY CLEANED TO REMOVE ALL OIL, GREASE, DIRT AND CHIPS
9. PART NUMBER (DRAWING NO., DASH NO., REVISION NO., SERIAL NO.) TO BE CLEARLY MARKED ON THE PACKAGING BAG OR PART ITSELF.

THIS DOCUMENT CONTAINS INFORMATION THAT IS THE PROPRIETARY PROPERTY OF HYTEC, INC.
REPRODUCTION, DISCLOSURE, OR RELEASE TO OTHERS, MANUALLY OR ELECTRONICALLY,
IS STRICTLY PROHIBITED WITHOUT THE PRIOR WRITTEN CONSENT OF HYTEC, INC.



UNLESS OTHERWISE SPECIFIED: DIMENSIONS ARE IN MILLIMETERS -TOLERANCES-	
DECIMALS X = +/- .5 X = +/- .1 .XX = +/- .01 .XXX = +/- .001	ANGULAR .X = +/- 30° .XX = +/- 15° SURFACE FINISH = 250
FINISH	
PART NO. 111-PHX-02-3805-1	

CAD GENERATED DRAWING. DO NOT MANUALLY UPDATE DO NOT SCALE DRAWING			HYTEC, INC		
			TITLE PHENIX CENTRAL UPGRADE FVTX HALF STATION INNER CORE		
	SIGNATURE	DATE	DWG. NO.	SIZE	SHEET NO.
Designer	Roger L. Smith	3/9/2009	111-PHX-02-3805	D	1 of 1
Drawn	Roger L. Smith	3/9/2009			
Checked	Walt Sondheim	5/27/2010			
Engineer	RJ Ponchione	3/9/2009			
Approved	Walt Sondheim	5/27/2010			
			SCALE 4:1	REVISION	